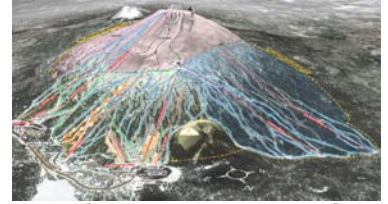




Mt. Bachelor, Oregon

Mar 17 - Mar 24, 2012

\$1470



Skiing

With over 3,683 acres and 3365 vertical feet of lift-accessed terrain, [Mt. Bachelor](#) is one of the largest ski resorts in the U.S. With a wide variety of terrain (5% Green, 25% Blue, 35% Black and 25% Double Black) there will be 360 degrees of skiing off the summit; the more adventurous can hike the adjoining cinder cone for a thrilling run down; or, ski the trees to find that great cache of powder!

Transportation to and from the mountain provided each day

Lodging

7 nights in the [Riverhouse Hotel & Resort](#) in Bend OR, welcome reception and daily hot b'fast provided



The Riverhouse, nestled along the Deschutes River in the heart of Bend, has spacious rooms with microwaves, mini refrigerators, coffee makers, and complimentary WiFi. Walk to restaurants, boutiques and shops. On-site amenities include three restaurants, live entertainment nightclub, fitness center, two pools, and three hot tubs. Free shuttle to downtown Bend.

Flights

RT on United AL from Dulles Airport to Redmond OR through San Francisco

- Depart IAD UA #567 7:15am Mar 17 Arrive SFO 10:07am
- Depart SFO UA #6464 12:50pm Arrive RDM 1:25pm
- Depart RDM UA #6826 6:00am Mar 24 Arrive SFO 7:37am
- Depart SFO UA #400 9:45am Arrive IAD 5:49pm

Signup and Payment Schedule

To confirm your place on the trip, [sign up online](#) and send the trip leader your deposit (**\$500** per person, payable to the Pentagon Ski Club). If you are not yet a club member or if you need to renew, please include a separate check and membership application. Interim payment of **\$485** will be due at our Nov 8 meeting and final payment of **\$485** will be due at our Dec 13 meeting. Add \$413 for the single supplement if you want a room to yourself. Add \$44 to final payment to pre-purchase a lift ticket for a 6th day of skiing. Seniors 65-69 deduct \$30 for the 5-day lift ticket or can opt for the 6-day ticket for the standard trip cost. Seniors 70+ deduct \$70 for the 5-day ticket or deduct \$45 for the 6-day ticket. Non-skiers may deduct \$220 for the package.

Trip Leader:

Jim McDonough

916 DeWolfe Dr

Alexandria VA 22308

(703) 619-0020

E-mail: psctaos2011@gmail.com

