

### President's Corner By Peter Porton



**O**ur September meeting always seems like the real start to the ski season, even if half our slots are sold out from your sign-ups on the web and at the picnic. I guess that's a leftover from the days when we didn't have a website and our picnics were in August.

Kudos to all who helped set the picnic up and all of you who attended. We had about 120-130 attendees and the great weather during the hottest month in DC's history certainly helped.

That's a segue into what the PSC really needs over this year and beyond: volunteers! We have committees (see page 2) that could use assistance (such as Sales; we'll give you plenty of help and training) and we also need tripleaders in order to keep our schedule as large as it is. The fewer trips we have on our schedule, the less people ski with us, and the less people who ski with us, the smaller the club becomes: it's an inward death spiral that we would like to avoid. You don't have to be a council member to be a tripleader. We merely ask that you attend most of our council meetings (a week before the membership meeting) and be an assistant on one trip. It's definitely worth the effort.

So if you're interested, call me or any council member and join us!



### More \$Money\$ Airlines

By Steve Peirce

**Y**ou may have noticed that most Pentagon Ski Club trip prices went up this year, and most of that was due to increased airline prices. When our first trip proposals came back from the brokers, it became imminently apparent that airline bargain prices were a thing of the past. In fact, our most popular United Airlines non-stop group rate flights from Dulles to Denver were priced in excess of \$600, not including their extra fees for luggage and other amenities.

To alleviate that kind of unacceptable price, the PSC considered alternatives such as taking one-stop flights on other airlines, and flying from either Reagan National Airport or Baltimore Washington International Airport. We also looked at taking Southwest Airlines flights, but they were not available for book-

ing until six months before their scheduled flights. By exercising these alternatives we have been able to significantly reduce the price of most trips. While we were considering the multiplicity of these options, we also tried to acquire the most reasonable flight times.

For example, our Western Carnival trip to Snowmass would have been priced at \$2K if we had taken the non-stop United Airlines flights originally offered by our broker. But by not taking these flights we were able to reduce the Snowmass price to \$1750.

The PSC is always working hard to provide you the best trip available for the best price!



*Where's the PSC Going this Season?*



# Pentagon Ski Club

2011-2012 Council & Committees

Club Hot Line: 703-471-7791

Website:  
[www.pentagonskiclub.org](http://www.pentagonskiclub.org)

Council Members & Committees  
(number indicates year the term expires)

President & Editor: Peter Porton (13)  
(H: 703-471-7791) prespsc@comcast.net  
Vice-President & Racing: Dave Olsen (14)  
(H: 301-579-2749) (W: 202-385-7207)  
dolsen@pentagonskiclub.org  
Secretary & Trip Support: Steve Thompson (14)  
(H: 703 435-5170) stevethompsonva@gmail.com  
Treasurer: Christina Anderson (13)  
(H: 703-719-6714) gerakisparta@yahoo.com  
Trips: Steve Peirce (14)  
(H: 301-924-5173) scpeirce@verizon.net  
Special Projects/Meetings: Maggie Fitzgerald (12)  
(H: 703-461-3027) magsfitzgerald@comcast.net  
Membership: Cheree Peirce (12)  
(H: 301-924-5173) cheree2be@yahoo.com  
Publicity: John Pratt (12)  
(H: 703-534-5759) snowsnke@aol.com  
Skier Improvement: Lucy Gruenther (12)  
(H: 703-727-9287) lmandwx@hotmail.com  
Membership Communications: Jim McDonough (13)  
(H: 703-619-0020) jmc dono683@aol.com

PSC Committee Chairpeople

Webmasters: Laura Harley & Dave Olsen  
lharley@designinteractive.com  
Membership Database Manager: Pat Riggs  
pat.riggs1@verizon.net  
Smugmug: Alden Hingle  
aldenhingle@gmail.com

## *The Lifeline*

Editor: Peter Porton  
Copy Editor: Dave Olsen

*The Lifeline* is issued quarterly. Any articles are welcome for publication, but the editor has the right to edit for size and PSC policy.

## PSC MEMBERSHIP FEES

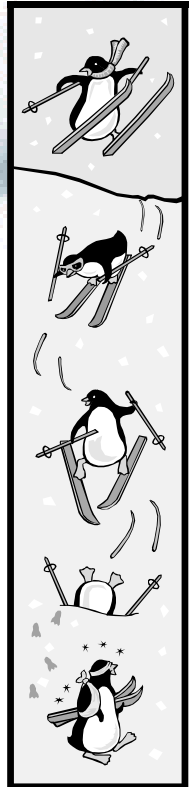
	1-YEAR	2-YEARS	3-YEARS
SINGLE	\$30	\$55	\$75
FAMILY	\$40	\$75	\$100

2011-2012

## PSC MEETING SCHEDULE

Our meetings are held on the second or third Tuesday of the month as listed below at the Officers Club at Fort Myer, VA, at 7 PM

- Picnic, Saturday, July 16
- Tuesday, September 13
- Tuesday, October 11
- Tuesday, November 8
- Tuesday, December 13
- Tuesday, January 17
- Tuesday, March 13
- Tuesday, April 17



## Membership Benefits

To access the *Membership Benefits* area in the National Ski Council Federation website at [www.skifederation.org](http://www.skifederation.org) (all PSCers are automatically members), use the following:

**userid = skiclub; password = member**

## Membership Updates

Please take a moment to check the date on your newsletter label—it indicates the month your membership expires. If you need to renew or change your address, please see Cheree Peirce at our meetings, contact her at [cheree2be@yahoo.com](mailto:cheree2be@yahoo.com) or send her a check (see membership fees up above).

**Cheree Peirce**  
19701 Golden Valley Lane  
Brookeville MD 20833





*By Peter Porton*

It's time to start thinking about Christmas gifts. I personally think treating yourself or your family to a nice end-of-the-year vacation to a fabulous ski resort is ideal. And what ski resort is better early in the year for a seven-day (six-night) vacation than fabulous Steamboat and its world-famous champagne powder. Skiing with Billy Kidd right after lunch is a great thrill as well.

Why Steamboat? Because it has more than a 3,400-foot vertical on 3,000 acres, 18 lifts (including one gondola and six high-speed quads), all the glade skiing you could ask for, skiing at every level, free skiing for kids under 13 (one per 5-day skiing parent/grandparent), plenty of clubs and restaurants, and it's far enough away from Denver to prevent huge day-crowds.

We'll be leaving Dulles on December 27 at 8:03 AM on SW Airlines and arrive in Denver at 10:15 AM (no luggage fees on SW!). The bus will stop for groceries before the 3+ hour drive (depending on the weather) to Steamboat. We'll have a leisurely trip back as our January 2 flight leaves at 7:10 PM from Denver and arrives home at 12:25 AM. A little late, yes, but you'll have a great morning in Steamboat to go shopping and packing.

We'll be staying at the ski-in, ski-out Ptarmigan Inn, with one king or two queen beds per room, plus high speed internet connection, TV and VCR, small refrigerators and a coffee machine, hair dryer, a balcony, a restaurant and lounge, and an outdoor heated pool and hot tub. It also has a ski room so you don't have to schlepp your skis to your room. Full week breakfasts are an option at \$78/person, or fill up your refrigerator; another option is to ski down to the base (we're located right above the gondola) and grab something there.

If you want to opt for a fifth day of skiing (our package includes 4-out-of-6 day lifts), it costs \$64 if paid in advance. The cost of the trip is \$1625; the deposit is \$500, a payment of \$625 is due on October 1, and the final payment of \$500 is due December 1. Single supplements are \$685. Also, \$685 discounts are available for teens 13-17 staying in parents' room (must in-



Ptarmigan Inn

clude 4 days of tickets). Discounts for kids under 13 staying with parents is \$940; kids this age ski for free if both parents ski. Steamboat is perfect for young families!.

If you're interested in starting the season at this great resort, send me a deposit of \$500 to 11918 Moss Point Lane, Reston, VA 20194. Please make all checks out to the PSC. If you need any more information, e-mail me at [prespsc@comcast.net](mailto:prespsc@comcast.net) or call me at 703-471-7791.



## Ski The Big One

*By Steve Peirce*

Vail is constantly rated Number One in most ski categories, and sets the standard for American skiing. Vail is the largest single mountain in North America. It could easily be compared to two other major western resorts, and they would still come up short by comparison, because of the following facts:

- 3,450 ft vertical drop—from the peak at 11,570 ft to the base at 8,120 ft
- 5,289 acres of skiable terrain with more than 190 trails
- 18% rated beginner, 29% intermediate, 53% expert
- 346 annual inches of snowfall supplemented by 390 acres of snowmaking
- 34 strategically placed lifts.

Vail's front side alone boasts more than 127 individual trails with everything from smooth, gentle beginner slopes to corduroy cruisers to moguls, glades and terrain parks plus 989 acres of beginner and intermediate slopes and another 921 acres of advanced terrain.

Vail's legendary back bowls span 3,000 acres and offer an unparalleled powder paradise with spectacular views and runs that last forever! Seven natural bowls stretching over 6 miles wide. Blue Sky Basin offers a true adventure experience for intermediate and advanced skiers. 645 acres of natural, gladed terrain nestled more than 2 miles into the wilderness. Three highspeed lifts service the type of terrain typically reserved for those who choose to hike or helicopter in.

*(Continued next Page)*

Our trip includes a 5-day interchangeable lift ticket that can also be used at Beaver Creek, Keystone, Breckenridge and Arapahoe Basin. A 6th-day lift ticket may be pre-purchased for just \$30 (add to your final payment). Non-skiers, EPIC pass holders, cross-country skiers and children age 4 or less may deduct \$288 from the trip cost.

Our 7-night stay will be in the Evergreen Lodge. Evergreen Lodge is located between Lionshead and Vail Village, just one bus stop from Lionshead on the free town shuttle bus route. The spacious rooms have been recently renovated. Amenities include large heated outdoor pool, a huge indoor hot tub, dry heat saunas, game room, fitness room, and the Altitude Billiards & Sports Club. Complimentary high speed internet is available in the rooms and WiFi in the lobby. We'll also have daily hot breakfasts, an ideal time to get together for ski planning purposes.

The \$1590 trip price is based on double occupancy in each bedroom; \$548 extra for single occupancy (add \$300 to your interim & \$248 to your final payment). We're scheduled to depart Reagan National Airport on Frontier Airlines at 8:59 AM Saturday, January 7, and arrive nonstop in Denver at 11:07 AM. We return the following Saturday, January 14, with an 11:40 AM departure from Denver and a 4:53 PM nonstop arrival at Reagan National. The trip price includes two free checked bags!

To confirm your place on the trip, sign up online at our website and send me your initial deposit (\$500 per person, payable to the Pentagon Ski Club; mail to me at 19701 Golden Valley Lane, Brookeville, MD 20833). If you're not yet a club member or if you need to renew, please include a separate membership application and check. A \$500 interim payment will be due at our October 11 club meeting and final payment (\$590) will be due at our December 13 meeting. If you would like more information or wish to discuss travel arrangements, or upgrading to a Vail Resort EPIC Seasons Ski Pass, please contact me at (301) 924-5173.



*By Jim McDonald*

Escape with the Pentagon Ski Club over Martin Luther King Weekend. We'll be staying at the historic Ben Lomond Hotel in Ogden Utah and skiing at Snowbasin and Powder Mountain; both ski areas are located just outside Ogden. At \$1140, this is one of the most affordable trips the club is offering this year.

Our trip starts on Thursday, January 12, 2012 at National Airport, taking Continental/United Airlines through Houston to Salt Lake City, Utah. After a short bus ride to Ogden we'll have four great days of skiing before we have to return home on Tuesday, January 17.

**The Hotel:**

The Ben Lomond Suites Historic Hotel is the only all-suite

hotel in downtown Ogden. The rooms have been substantially remodeled. All of the suites have large sitting rooms and bedrooms. Most suites have great views of the historic downtown



Ogden area or the mountains. It's located within walking distance of the historic 25th street and Union Station where there are numerous restaurants, bars, coffee shops, and shopping. Breakfast is included. Internet is free and all guest suites, meeting spaces and hotel common areas come equipped with wireless Internet. The hotel recently opened MacCool's Public House, an Irish pub-style family restaurant for all to enjoy.

In addition to our dedicated transportation to and from the ski areas, Ben Lomond Suites has partnered with the city of Ogden to provide a shuttle to the local ski resorts. So we'll have added flexibility to get to and from the slopes.

**Snowbasin Ski Area:**

We will ski two days at Snowbasin resort. The ski area has 3,000 skiable acres and 3,000 vertical feet. With 113 runs and plenty of Utah powder there should be something for everybody. Snowbasin has 10 lifts and operating hours from 9:00AM to 4 PM, and is far enough off the beaten path that there should be no lift lines. This area is known for its high alpine bowls, steep chutes, groomed cruisers, and deep powder. Snowbasin was the site of the 2002 Olympic Men's and Women's downhill races and has one of *Ski* magazine's 10 best ski runs (John Paul). This area is owned and operated by the Sun Valley Corporation so you know they'll provide the ultimate in skiing luxury. NASTAR will be available for those club members wanting to test their skill against the clock.

**Powder Mountain Ski Area:**

Our other two days of skiing will be at Powder Mountain. This ski area truly offers something for everybody: 2,800 acres and 2,200 vertical feet of "lift served" skiing for those that like to ride the lifts; and an additional 4,200 acres of skiing served by snowcats for the more adventurous. With an average of 500 inches of snow per year, there should be plenty of snow.



**Details:**

To secure your place on the trip, sign up online and send your deposit (\$400 per person, payable to the Pentagon Ski Club) to Jim McDonough, 916 DeWolfe Dr, Alexandria VA, 22308. A \$375 interim payment will be due at our Sept 13 meeting and final payment of \$370 will be due at our Oct 11 meeting. Non-skiers may deduct \$190. Seniors 70+ and children under 12 may deduct \$24 for lift tickets. If you would like more information or wish to discuss special lodging or travel arrangements, please call me at (703) 619-0020 or e-mail: [jmcdono683@aol.com](mailto:jmcdono683@aol.com)



*By Steve Thompson*

**O**n January 20, 2012, an undoubtedly hearty group of PSC skiers will embark on a ski holiday to the popular French ski resort of Val d'Isère. There will also be an optional post-trip 4-night extension to Vienna, Austria. The trip, which sells for \$2,800 (for Vienna add \$760), includes round-trip nonstop flights from Washington Dulles to Geneva, Switzerland, private coach airport transfers (about 3 hours each way), 7 nights in the Hotel Ormelune (right at the base of the slopes!) with breakfast, and 4 nights of dinners at the hotel. The Vienna extension includes flights from Geneva to Vienna and back to Washington Dulles via Frankfurt, and 4 nights in the Mercure Central Hotel with a daily breakfast. (More trip details are available on the website.)

The town of Val d'Isère, at 5,971 feet above sea level, is the center of some of Europe's most spectacular skiing. From what was once a small alpine farming village, Val d'Isère continues to develop into a world-class ski area. Together with the neighboring resort of Tignes, Val d'Isère is part of Espace Killy ski area, named after Jean-Claude Killy, who dominated alpine ski racing in the late 1960s and grew up in Val d'Isère. He won gold medals in all three alpine events (slalom, giant slalom, and downhill) at the 1968 Winter Olympics, which were held in Grenoble, France—a feat that is unmatched to this day.



With its location against the peaks of the Italian border, Val d'Isère has a record of exceptional snowfall. There are 94 ultra-modern lifts spread across the entire 300 km area with a capacity of over 100,000 skiers per hour. Some of the lifts are a bit unusual, like the underground monorail that takes skiers to the top of the glacier at Tignes. The old town consists of stone and wooden-clad chalets and a village church in the baroque style. There is a lively commercial center with fashionable shops, cafes, bars, and restaurants. Every Monday there is a market where you can find all sorts of cheese, bread, and a number of other items of interest. Val d'Isère is made up of a number of small hamlets that are linked by free buses, including Le Cret, Le Joseray, Le Chatelard, La Legettaz, Le Laisinant, Le Daille, and Le Fornet. There is a new health and recreation center, called Oxygen, in Val d'Isère, that has a number of indoor pools and other fitness and relaxation options, such as yoga and pilates classes.

I asked for some recommendations from a good friend who lives in Paris and has skied Val d'Isère for the past 30 years. Alex said some of his favorite runs are OK or Oreiller Killy, M, Daille, Glacier de Pissailas, and Germain Mattis. On the Tignes side, he mentioned Double M. Alex also said that the area is known for

its fondue and raclette. He said Les Marmottes is a good dining option during the day on the Val d'Isère side. For a good evening meal, he recommends L'Arolay. I am hoping to see Alex on the slopes in Val d'Isère this winter where he can provide us all with more insider tips.

Based on early sign-ups, there will be a good number of travelers that will be extending the trip in Vienna. As the political and cultural capital of Austria, the touring and sightseeing options are nearly endless. While in Vienna, there are a number of musical performances that might be of interest, including the Vienna Boys Choir and an orchestral concert at the Schoenbrunn Palace with dinner and a tour. You might also want to view an exercise session or performance of the Lipizzaner Stallions at the Spanish Riding School.

If you are interested in going on this exciting trip, don't hesitate—sign-up today!



## **Pow, Pow, Pow, P-P-P-P-P-P-P-P-Powder!**

*By Lucy M. Gruenther*

**T**his trip departs BWI (Baltimore, MD) on Saturday, January 28, 2012 and returns to BWI on February 4th. Snowbird and Alta are located in the Little Cottonwood Canyon in the Wasatch mountain range, less than 30 miles from Salt Lake City, UT. Although both resorts are well known and loved for their challenging terrain, they have something for every skiing ability. Our 6-day lift tickets are good at both Alta and Snowbird, which are interconnected via lifts.

Alta is a skier's mountain; snowboarding is not allowed. Alta is well known for its powder skiing, as well as its spectacular scenery and varied terrain. Alta's climate produces the world-renowned high volume/low moisture snow that is so dreamy. While drafting this article, I came across a quote in *Ski* magazine by Evelyn Spence, an Alta lover: "Alta snow is like an improved version of air: Skiing it is flying without leaving the ground." Wow! I'm ready to get on the plane now and head for Utah.

Snowbird is also known for its steep, powder and off-piste skiing. A tunnel enclosing a one-way conveyor lift connects Peruvian Gulch to Mineral Basin, allowing easier access for beginners and intermediates to new terrain, as well as reducing traffic on the aerial tram. According to the Snowbird brochure, the view from Mineral Basin makes "your temples throb, heart pound and socks roll up and down."

We'll be staying at the Cliff Lodge, Snowbird's only ski in/ski out accessible hotel. You'll be able to enjoy 3 restaurants, 2 lounges, swimming pools, hot tubs, as well as world class spa treatments at the Cliff Spa. The heated hotel pool and 3 hot tubs

are located outdoors next to the Chickadee beginner trail, where one can relax and enjoy the beautiful views. Each unit in the Lodge is assigned a ski/snowboard locker, which has boot dryers and shelves. Additional Cliff Lodge amenities include concierge, high-speed wireless internet, and ski shop with rental facilities.

Dining options at the Cliff Lodge include the Aerie Restaurant on the 10<sup>th</sup> floor with a sushi bar and lounge, featuring live music twice a week. El Chanate, the Mexican restaurant, has Utah's largest tequila selection in the El Chanate Cantina. The Atrium Restaurant serves breakfast and lunch and is situated at the base of the 11-story glass wall and affords views of the wonderful scenery. One can also walk to the slopes and Snowbird Center, which houses the loading area for the base-to-summit tram, and where ski shops and cafes are located.

<u>Mountain Stats:</u>	<u>Snowbird</u>	<u>Alta</u>
<b>Ave. Annual Snowfall:</b>	<b>500"</b>	<b>560"</b>
<b>Vertical Drop:</b>	<b>3,240'</b>	<b>2,020'</b>
<b>Base Elevation:</b>	<b>7,760'</b>	<b>8,530'</b>
<b>Top Elevation:</b>	<b>11,000'</b>	<b>10,550'</b>
<b>Skiable Acres:</b>	<b>2,500</b>	<b>2,200</b>
<b>Terrain:</b> 27% Beginner, 38% Intermediate, 35% Advanced		
25% Beginner, 40% Intermediate, 35% Advanced		
<b>Number of Runs:</b>	<b>85</b>	<b>116+</b>
<b>Lifts:</b> 1 tram, 4 quads, 6 doubles		
2 quads, 2 triples, 3 doubles		

To get more information, go to the Ski Trips link on our website at [PentagonSkiClub.org](http://PentagonSkiClub.org), where you can sign up and also find links to the Alta, Snowbird, and Cliff Lodge websites.

Five months to go, and counting down!



*By Maggie Fitzgerald*

Come join the lively ones at the fancy Kandahar Lodge for seven days of fabulous ski-in and ski-out exploring nearly 100 trails. Imagine yourself awakening slopeside to a fine breakfast with fellow skiers, included with the price. Get this, if you are 70 years or older you can ski for free and those 65 plus get a great break, too. It should be quite the ski trip; you can eat, stretch, ski, break, ski, eat, ski, nap, ski, refresh, soak, rest and do it again the next day. Sounds perfect to me!

Yes, almost too good to be true: this trip is so affordable at only \$1400 at peak season. Our departure from Dulles airport is on a comfortable mid-morn-



ing flight through Denver and landing in Kalispel, Montana before dark. Rooms have 2 queen size beds and microwaves, fridge and lots of space. The inviting lodge with its large fireplace and nearby Snug bar is a great gathering place for apre ski activities.

Whitefish Mountain gets over 25 feet of snow yearly and is protected from those crippling winds and doesn't offer the usual altitude challenge found in Colorado resorts. The summit is 7,000 feet offering 3,000 acres of skiing, 93 trails, bowl and tree skiing, and a 2,353 foot vertical drop with 20% beginner, 50% intermediate, and 30% expert terrain. You'll find 12 lifts including 3 high-speed quads/gondolas.

If you need a break from regular skiing, you can tour Glacier National Park, go dog sledding or even try snowcat adventure skiing, partake of the wonderful spa "Remedies Day Spa" in our hotel, sleigh rides, moonlight skiing during the full moon, or even night skiing and snowmobile tours. Finally, you can take one of the Ambassador Tours of the ski area, offered twice daily. Did I mention that there are free shuttle buses around town day & night? Finally, we'll be there during their Winter Carnival featuring fireworks and a parade in town.

We'll also do one day in Canada at Fernie Ski Resort. This will give you a chance to ski something different (Fernie is very large). It's included as part of the trip. However, remember that you'll have to bring your passport, even if it is a bus trip, or they won't let you into Canada and I hear it's very boring to spend the day at the border crossing.

Looking for powder skiing and all kinds of adventure? Please join up with our fun group!



## Experience the Power of Four

*By Christina Anderson*

Aspen/Snowmass—anywhere else this would be four separate vacations. It's not just one mountain—it's Snowmass, Aspen Mountain, Aspen Highlands and Buttermilk. With four choices and 5,303 acres, decide which mountain fits your passion. **Snowmass**, one of the favorite skiing mountains for many of us, is "the best intermediate ski area in the world" and the ultimate cruising paradise with so many runs, so much variety with impeccably groomed cruisers, steeps, glades, off-piste, terrain parks, a superpipe and the longest lift-served vertical rise in the United States. The lovely European-style village has lots of great places for lunch and dinner, not to mention the free granola bars and coffee in the morning. **Aspen Mountain**, rising out of the heart of the downtown, with its famous black and double-black diamond steep terrain, bumps, tree runs and incredible views, is fun for skiers and snowboarders alike. And for an out-of-bounds experience, Aspen Mountain



**P o w d e r** Tours will hook you up with fresh tracks on the backside. **A s p e n Highlands**, with a breathtaking 360-degree

view of the Maroon Bells, has an abundance of expert terrain as well as groomed cruisers; it's no wonder Aspen Highlands has been the locals' favorite for over 50 years. Hike the 12,392 feet to the summit of Highland Bowl for the ultimate inbounds backcountry rush. Or take the Deep Temerity lift to access recently-added 237 skiable acres. It all adds up to some of the most challenging big-mountain terrain in North America. Or try **Buttermilk**, which built its 50-year legacy on wide-open and gently rolling trails that cater to beginners and families and is North America's best family learning center. Today it's famous for hosting the ESPN Winter X Games and being voted Number One by **Transworld Snowboarding** magazine readers' poll for best park and pipe. The 22-foot superpipe in the legendary terrain park does not disappoint, as many X Games winners, Olympians and up-and-comers can attest.

**Snowmass** was ranked by *Ski* magazine in the fall of 2010 as the #6 best resort overall, Aspen #7 & Aspen Highlands #10. Something new in Snowmass is the all new Ullrhof on-mountain restaurant at the bottom of the Big Burn; it's a complete makeover of an old fashioned burger joint. Activities include skiing, snowboarding, tubing, snow-shoeing, cross-country skiing, 10th Mountain Division hut tours, sledding, dogsled rides, sleighrides, and snowmobiling.

**FACTS:** Annual Average Snowfall is 300 inches.

**Snowmass:** Base elevation: 8,104 ft./2,473 m, Summit elevation: 12,510 ft./3,813 m, Vertical rise: 4,406 ft./1,343 m, Terrain: 3,132 acres/1,267 hectares, Number of trails: 91, Miles/km of trails: 147 miles/237 km, Longest run: 5.3 miles/8.5 km, Types of trails: easiest: 6%, more difficult: 50%, most difficult: 12%, expert: 32%, Parks and pipes: 3 terrain parks (Snowmass Park, Makaha and Lowdown), 1 superpipe (new this year, 22 feet high!) and 1 beginner pipe, Lifts: 21 Total: 19 primary: 1 eight-passenger gondola, 1 high-speed six-passenger lift, 1 six-passenger pulse gondola, 7 high-speed quads, 2 quads, 4 ski/snowboard school lifts (including magic carpets); 2 secondary: 2 platter pulls.

**Aspen Mountain:** Base elevation: 7,945 ft./2,422 m, Summit elevation: 11,212 ft./3,418 m, Vertical rise: 3,267 ft./996 m, Terrain: 675 acres/273 hectares, Number of trails: 76, Miles/km of trails: 64 miles/103 km, Longest run: 3 miles/4.83 km, Types of trails: easiest: 0%, more difficult: 48%, most difficult: 26%, expert: 26%, Lifts: 8: 6 primary – 1 gondola (14-minute ride), 1 high-speed quad, 1 high-speed double, 1 quad, 2 doubles; 2 secondary – 1 quad (Little Nell), 1 double (Bell Mountain).

**Aspen Highlands:** Base elevation: 8,040 ft./2,451 m, Sum-

mit elevation: 11,675 ft./3,559 m. (top of Highland Bowl 12,392 ft.), Vertical rise: 3,635 ft./1,108 m., Terrain: 1,028 acres/416 hectares, Number of trails: 118, Miles/km of trails: 84 miles/135 km, Longest run: 3.5 miles/5.6 km, Types of trails: easiest: 18%, more difficult: 30%, most difficult: 16%, expert: 36%, Lifts: 5: 3 high-speed quads, 2 triples

**Buttermilk:** Base elevation: 7,870 ft./2,399 m, Summit elevation: 9,900 ft./3,018 m, Vertical rise: 2,030 ft./619 m, Terrain: 470 acres/190 hectares, Number of trails: 44, Miles/km of trails: 21 miles/34 km, Longest run: 3 miles/4.83 km, Types of trails: easiest: 35%, more difficult: 39%, most difficult: 26%, Parks and pipes: 2 terrain parks: Buttermilk Park has over 100 features including a 22-foot superpipe and an X Games slopestyle course. For the beginner: Panda Pipe and Ski & Snowboard Schools Park (S3 Park), Lifts: 9: 2 high-speed quads, 3 doubles, 2 handle tows.

Our package includes a 5-day lift ticket good for all four mountains; you may pre-purchase the extra-day lift ticket for a 6<sup>th</sup> day of skiing for \$41. Plus we have all the Blue Ridge Ski Council catered events: Sunday Night Welcome Reception 6:30pm–9:30pm, Tuesday Après Ski Party 5:00pm – 7:00pm and the Farewell Dinner Dance Friday 6:00pm – 11:00pm, all at the Snowmass Conference Center.

The public transportation system is free, reliable, and easy to use between the four mountains.

We will be staying at the Wildwood Lodge (hotel rooms), with daily hot buffet breakfast, located directly above the Village Mall and adjacent to the Snowmass Conference Center, where all the BRSC parties will be held. The Wildwood is just steps from everything Snowmass Village has to offer. Our rooms have a mini-fridge, coffee maker, humidifier, complimentary toiletries, satellite TV and free Internet. In addition, the lodge features a cozy lobby bar with a fireplace where we can hang out and have fun, health club access (surcharge), laundry facilities, an outdoor heated pool and whirlpool, hot tub, daily cleaning and complimentary Aspen Airport transportation. You can enjoy dinner and mountain views at the seasonal Village Steakhouse. The address of the Lodge is: 100 Elbert Lane, Snowmass Village, Colorado 81615, Phone: 970.923.8224.

We're scheduled to depart on a nonstop Southwest flight from Dulles to Denver with no charge for our bags. Flight numbers and times may of course change again by the time of our trip; the current schedule is always available on the Trip Details page on the club website.

If you would like more information or wish to discuss special lodging or travel arrangements, please contact me at (703) 719-6714 (h); (703) 489-6171 (c) or gerakisparta@yahoo.com





*By Fred Gardinier*

**J**ackson Hole ski resort in February, 18-25, what could be better? Hurry to sign up; the trip is filling like hotcakes. What is not to love: 459 inches of snowfall per year! Jackson Hole has more than 2,500 acres of inbound skiing, with 50% expert, 40% intermediate, and 10% beginner terrain. This is one of the best ski areas in the world! The price for the trip, \$1490, is one of the lowest of any stateside trip from the PSC this year. The chance for fresh powder is high. The only question is how deep it will be and can you ski it? There are opportunities to take a class on back-country skiing/snowboarding. At least two club members will be taking this class. Join us to ski powder on over 4,000 feet of vertical terrain. In addition, the trip includes a day-trip to the nearby ski area of Grand Targhee. This resort offers over 2,000 feet of vertical drop



on 81 trails with 20% expert, 70% intermediate, and 10% beginner terrain.

The group will be staying at the 49er Inn and Suites in the town of Jackson. We'll have an elk BBQ dinner in-



cluded as well as continental breakfasts every morning. The hotel is close to all that the town has to offer, including a variety of restaurants, bars, art galleries, and more. Jackson Hole is also close to Yellowstone National Park, so you can take a day trip into the snowy park and see the wildlife and even the Old Faithful geyser. There are also hot springs in the area that can be a fun outing.

Please review the PSC website for all the trip details. If you have any questions, contact one of the trip leaders.



## A New Adventure

*By Steve Peirce*

**T**his is the only opportunity you will have to ski with the first Washington DC based ski club trip to Revelstoke, British Columbia. The Pentagon Ski Club continues to be the leading club in the DC area to venture into new ski territory. The PSC was first into the Okanagan Valley where we skied Sun Peaks, Silver Star, and Big White; and first to ski Kicking Horse. Now we are first to ski Revelstoke. But this opportunity is limited by the available airline space for twenty lucky skiers, and we are almost sold out.

With 5,620 vertical feet, Revelstoke boasts that it is North America's highest lift-serviced vertical and is the only resort worldwide with lift, cat, heli, and backcountry skiing all from one base village. The present two high-speed quads and eight-passenger gondola provide access in the North Bowl. Future development of Revelstoke will open up three more bowl areas.

Our 6-night lodging at the Powder Spring Inn with daily breakfast features hotel rooms that are conveniently located in town within walking distance to shops, restaurants, and the aquatic centre. The mountain is just a short three-mile ride away via the ski shuttle bus. After our last day of skiing Friday, we will spend the night at the Kelowna Sandman Hotel just 10 minutes from the airport, so we can easily catch our morning airline flight.

Our trip includes a 5-day Revelstoke lift ticket that can be upgraded to a 6-day lift ticket if pre-purchased for \$45 (add to your final payment). But we also have the very cool options of Cat Skiing Revelstoke for \$405 and Heli Skiing with Selkirk Tangiers for \$700. With annual snowfalls of 40 to 60 feet, the British Columbia powder is calling—don't be left out!



The \$1640 trip price is based on double occupancy in each bedroom; it's \$370 extra for single occupancy (add \$370 to your interim payment). We're scheduled to depart Reagan National Airport on Air Canada at 6:20 AM Saturday, March 10, and arrive in Kelowna BC at 1:56 PM.

We return the following Saturday, March 17, with an 8:50 AM departure from Kelowna and 9:40 PM arrival at Reagan National.

To confirm your place on the trip, sign up online at our website and mail me your initial deposit (\$500 per person, payable to the Pentagon Ski Club; at 19701 Golden Valley Lane, Brookeville, MD 20833). A \$640 interim payment will be due by our November 8<sup>th</sup> club meeting and final payment (\$500) will be due by our January 17<sup>th</sup> meeting. If you would like more information or wish to discuss travel arrangements, please contact me at (301) 924-5173.



# Ski Andorra

*By Peter Porton*

**T**his is not your grandfather's Andorra. It's not even the PSC's Andorra (we were there in '04). It's changed greatly since those days. No longer is the yellow crane the national bird of Andorra; a lot of the construction we saw in those days is now completed.

Where is Andorra? It's in the Pyrenees, the snowy mountain range that divides France from Spain and it's one of the smallest countries in the world. The two ski areas, Grandvilara and Vallnord, are composed of 10 ski mountains, 7,600 acres, a vertical of 3,600 feet, 1,482 snow canons, and 187 miles miles of trails. Each area's mountains are now connected with new lifts, making the skiing back and forth much easier. A great bonus is that those of you 70 and over ski for free; if you're 65-70, tickets are half price. (I miss it by a half year.)

This is the BRSC Eurofest, which means we'll have apres-ski parties as well as a Thursday goodbye dinner/dance. We'll have two trip options. The regular, one-week trip to Andorra flies from Dulles on Saturday, March 3, on Air France to Barcelona via Paris. You'll visit the Montserrat Monestary on the bus drive up to the reort. We all (all of the BRSC) will be styng at the 5-star Hotel Crowne Plaza in Andorra la Vella. There will be an optional day trip to France's famous medieval fortified city of Carcesonne. We'll have our own private bus system which can also be used while everyone else is skiing to visit town. Andorra la Vella has one of the world's largest spas (Caldea) which might be worth a day by itself. All breakfasts are included as well as

five dinners (you'll want to check the city's restaurants). The hotel has all the amenities, so leave your hair dryer at home. Medical/repatriation insurance is included and cancellation insurance is available as an option. You'll return from Barcelona the same way you came over.

The optional trip is three nights in Madrid and one in Barcelona. The United flight leaves Dulles to Madrid via Munich on Wednesday, February 29. On Sunday will get to Andorra via a plane or train to Barcelona and a bus to the resort. We'll go home from Barcelona a day later than the regular group on Monday, March 12, via Munich.

We'll be staying at the AC Carlton Hotel in the center of Madrid, accessible to all the great sights we'll want to see. There will be an optional day trip to Toledo. Our assistant trip leader, Christina Anderson, has lived in Madrid and will help guide us to where we want to go.

We'll spend the final day/night after skiing in Barcelona at the NH Duc de la Victoria Hotel. We'll have almost a full day and will be located in the center of town. There will be plenty to see while we're there and I think I remember the location of a great tapas restaurant on the Ramblas.

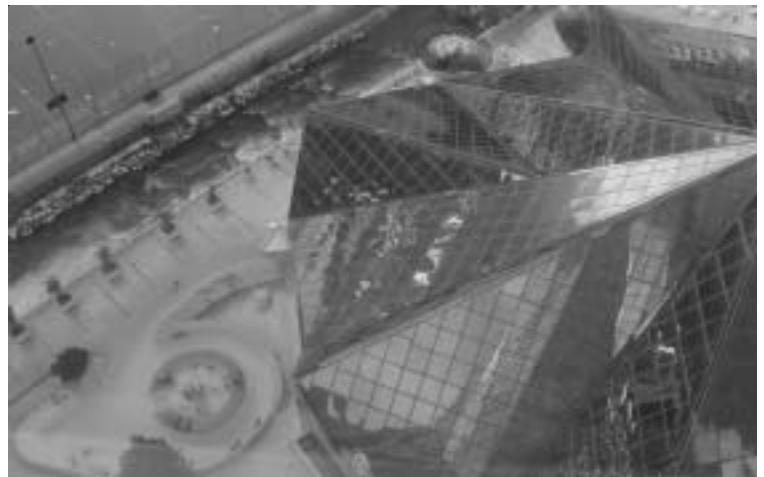
The price of the regular trip is a very reasonable \$2025 and the Madrid/Barcelona extension is \$800. Deposits are \$500 (+\$200 for Madrid); the next payment of \$800 (+\$300) is due November 8; the final payment of \$725 (+\$300) is due January 17. Please send all the checks to Christina Anderson at 5502 Maplefield Place, Alexandria, VA 22310.

Andorra la Vella is a great town and is duty-free, so if you want to do some shopping, just remember how much weight you can bring back.

There's still some space. If you have any questions, call me at 703-471-7791 or e-mail me at [prespsc@comcast.com](mailto:prespsc@comcast.com).



*Carcesonne*



*Caldea, Andorra la Vella*



## Try Something New

By Jim McDonough

**T**ired of Summit County? Been to Tahoe or Steamboat one too many times? Looking for a new skiing experience? Well the Pentagon Ski Club has the answer. How about skiing on a volcano—Mt Bachelor, Oregon. We'll be going there March 17-24, 2012. The mountain is famous for its dry snow, and while the average annual snowfall is a respectable 387 inches, last season was a record at 665 inches (153 inches in March alone). Mt Bachelor has 3,683 acres of lift-served skiing with a vertical drop of 3,300 ft. There are 10 lifts: 7 express quads and 3 triple chairs; the summit express runs to 9,000 ft, just 65 feet below the volcano's summit. There are 71 runs including the famous Cows Face. Runs are 15% green, 23% blue, 35% black and 25% double black. There are seven restaurants, three bars, and three coffee houses spread among four day lodges. The area offers *Ambassador Tours*—mountain tours with local skiers. We should have an après ski party on the mountain one afternoon and free cocoa and cookies each day. For those who are interested we may be able to arrange a free tubing party as well.

The trip cost is \$1470. It includes the flight; 5 of 6 days lift ticket (add \$44 for a sixth day, seniors 65-70 deduct \$30, 70+ and children 6-12 deduct \$70); Lodging is at the Riverhouse Hotel in Bend, Oregon (add \$413 for single supplement) with complimentary breakfast; and all transfers to and from the airport, and from the hotel to the mountain.

We'll leave on Saturday morning March 17, at 7:15 AM, from Dulles Airport on United Airlines. We will have a brief stop in San Francisco before landing in Redmond, Oregon, at 2:30 PM. After a short, 15-mile bus ride, the club will arrive at our hotel in Bend, Oregon.

Located in central Oregon at the eastern foothills of the Cascade Mountains at an elevation of 3,625 ft, Bend is an energetic city of over 75,000 noted for its scenic setting and year round recreational activities. With 9 craft breweries (Bend is also known as *beervana*), and plenty of restaurants, shopping, art galleries and museums, there should be plenty to keep everybody busy, even if you aren't skiing.

Just minutes from downtown Bend and nestled along the banks of the Deschutes River, the Riverhouse Hotel offers some of the finest lodging in Central Oregon. The beautiful and spacious hotel rooms include microwave ovens, refrigerators, wireless internet, coffee and coffee makers. While we'll have a complimentary hot breakfast, room service is available as well. The hotel offers three restaurants, live entertainment in the lounge and night club, indoor and outdoor heated pools and spas, an exercise room, mens' and womens' saunas, guest laundry facili-

ties, and a business center. There are 13 restaurants and a shopping mall within walking distance. And the hotel has a shuttle bus to take you to downtown Bend.

To secure your place on the trip, sign up online and send your deposit (\$500 per person, payable to the Pentagon Ski Club) to Jim McDonough, 916 DeWolfe Dr, Alexandria VA, 22308. A \$485 interim payment will be due at our Nov 8 meeting and final payment of \$485 will be due at our December 13 meeting. Non-skiers may deduct \$220. If you would like more information or wish to discuss special lodging or travel arrangements, please call me at (703) 619-0020 or e-mail me at [jmcdono683@aol.com](mailto:jmcdono683@aol.com)



By Maggie Fitzgerald

**T**he Deal: 7 nights in the Aspen Street Inn with welcome reception & daily deluxe breakfast. 5-day lift tickets. Fly reasonable times on American from Reagan National Airport to Montrose through Dallas. NASTAR is available for racing enthusiasts.

Listen, spring skiing in Colorado in late March is the best skiing you'll ever have! Last year I stayed in DC during those last two weeks of March figuring I'd get a head start on golf. What a waste! Do you remember it? It rained and rained and was cold and damp and just so ugly outside. Meanwhile, Colorado had dumps of powder through mid-April and even opened the slopes on the 4th of July. So, join me as we work on our tans and enjoy the wonders of Telluride. Believe me, your tulips will bloom whether you are home or not. You can expect 300 inches of snow and 300 days of sunshine in Telluride. Hey, Oprah and Ralph Lauren can't be wrong; they could ski anywhere but Telluride is the best around. Come see for yourself.

We'll be staying in a boutique hotel called the Aspen Street Inn which includes a hot breakfast buffet. The rooms have oval soaking tubs or, if you prefer, a large outdoor hot tub. You'll be welcomed with a nice wine and cheese party, too. The chair lift #8 is only a block away from our hotel. There are 1700 skiable acres with seven high speed lifts. Lots of trails for all levels. We'll make this the best Spring Ski Trip we've ever had. Don't miss it!





## Racing by Dave Olsen

### 2011 National Nastar Competition

**A**s I mentioned at our April awards ceremony and in the Summer *Lifeline*, 48 of our members registered and raced Nastar as members of the Pentagon Ski Club team, racing a total of 141 times. That's notable, as it's about half again more than what we had last winter.

Under Nastar rules, ski club teams are ranked according to the Team Point Average earned by their top racers. Team members score points based on the single best handicap they earned during the season: 1 point for finishing a race out of the medals, up to 4 points for a Bronze-medal run, up to 7 points for Silver, up to 9 points for Gold, and up to 10 points for earning a Platinum medal in your age/gender category. The number of medal points earned by the top fifteen team members are added together and averaged to get the team score. Our top fifteen racers earned a Team Point Average of 7.207 that placed us 131st out of the 1,961 registered teams—the top 7 percent!

### Individual Nastar Rankings

Twenty-eight of the 48 members that raced Nastar for the PSC last winter qualified for either the state or national rankings by having raced at least twice during the season. Skiers are ranked in their state of residence based on their second best handicap of the season. Two Nastar races on different days are required to qualify for the state rankings. To be ranked nationally, skiers must race in at least five Nastar races. The lowest (best) of a participant's handicaps is dropped and the best three remaining handicaps are averaged to determine a national ranking in their age and gender category.

Nastar ranks each racer based on the Division they're in—Platinum, Gold, Silver or Bronze. If you have two to four race days, your State Ranking handicap will determine which Division you're placed in. If you have five or more race days, your National Ranking handicap will determine which Division you're placed in.

Our results are listed in the table below. Nastar also ranks racers by age-group at each resort they raced at throughout the winter, and many of our racers placed well at the resorts where they raced—too much information to repeat here. If you look at

the online results you may notice a few racers whose names don't appear in our table. Those are racers that are no longer current members of the PSC, but are still linked to our club at Nastar.

One of our racer's results are particularly noteworthy. Jay Weides placed first in the Gold Division in Colorado, one of the toughest states in which to compete in any age group. Perhaps even more remarkable is Jay's first-place standing in the national rankings, outperforming 77 other racers in his age group throughout the entire U.S. Way to go, Jay!

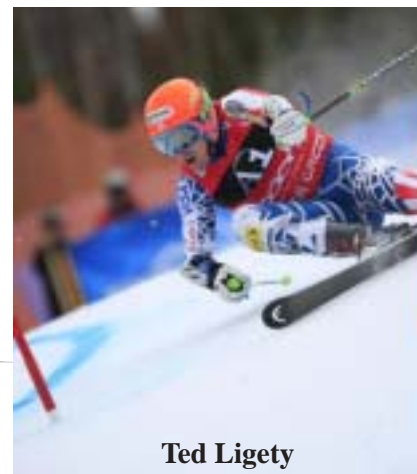
### Nastar National Championships

The fastest recreational skiers and snowboarders in North America descended on Winter Park, Colorado March 24-27 to compete in the Nastar National Championships. More than 4,000 starts were recorded on Friday and Saturday to determine the National Champions in age, gender and divisional groups. Every National Champion was invited to a follow-on Race of Champions competition on Sunday, where the two fastest racers won trips to South America to train with the US Ski Team.

To earn an invitation to the Nastar Nationals you had to rank in the top three in your age category at a Nastar resort. Twelve of our racers did just that, although no one actually made the trek to Winter Park for the event. Seven of our invitees are identified in the table. The others were Jerry Andersen, Townsend Belser, Tom Strawbridge, Scott Trout, and Sheryl Walsh.

### News from Nastar

Boulder, Colo. — NASTAR, the largest recreational ski and snowboard race program in the world, has announced that 2011 world champion Ted Ligety has signed on to be its official ambassador. NASTAR, which recently re-signed Nature Valley as its title sponsor, has long been a starting point for today's U.S. World Cup racers. "NASTAR introduced me to ski racing at a young age, fostering my continued love for the sport," said Ligety, founder and president of Shred Optics, a line of cutting-edge goggles, sunglasses and helmets. "I remember getting the competitive juices flowing by challenging my friends on the NASTAR course at Park City Mountain Resort."



**Ted Ligety**

From his early days in Park City (he put on his first pair of skis at age 2), Ligety has been known to push the boundaries of ski racing. He picked up the nickname "Ted Shred" from a Park City Ski Team coach at the age of 10 because his zeal for slicing through powder was legendary. His first major accomplishment was slalom silver at the 2004 Junior World Championships, but that was only a glimpse of his skiing proficiency.

At the age of 21, Ligety burst through with a gold medal at

*(Continued next page)*

the 2006 Olympic Games in Torino, Italy. He went on to win eight World Cup events from 2006 to 2011. He has won the overall World Cup giant slalom title in 2008, 2010 and 2011. Earlier this year, Ligety proved once again he's at the top in alpine skiing, winning the 2011 giant slalom Alpine World Championship.

SKI magazine announced that its signature racing program – Nature Valley® NASTAR – has been named the recipient of the 2011 USSA Russell Wilder Award. The Award, which has been given out annually since 1955, recognizes the most outstanding effort in focusing the interests of American youth on the sports of skiing or snowboarding. The NASTAR program was nominated for the Award by the Alpine Sport Committee due to its quality, accessibility and level of participation over the past year.

### 2011-2012 Club Racing Venues

We expect to have Nastar available on seven of our trips this winter. Here's the lineup, including the days that Nastar is normally operated (subject to change) based on the schedule posted at [Nastar.com](http://Nastar.com):

- Our holiday trip to Steamboat. Nastar is available daily.
- Our early January trip to Vail. Nastar is available Wednesday through Sunday, and daily at nearby Beaver Creek where our lift tickets are also good.
- Our mid-January trip to Snowbasin and Powder Mountain. Nastar is usually available weekends at Snowbasin.
- Our mid-February trip to Snowmass. Nastar is available Monday, Tuesday, Friday and Saturday at Snowmass and Wednesday through Sunday at both Aspen and Aspen Highlands, where our lift tickets are also good. The Blue Ridge Ski Council Nastar race against all the other clubs will be on Tuesday at Snowmass.
- Our late-February trip to Jackson Hole. Nastar is available daily.
- Our mid-March trip to Mt. Bachelor. Nastar is available weekends, so we might be able to race on Sunday.
- Our late March trip to Telluride. Nastar is available Wednesday through Sunday

2011 State and National Nastar Rankings													
Name	Days Raced	State	Division	State Hcp.	State Rank	...of	State Percentile	National Handicap	National Rank	...of	National Percentile	Nat'l's Invite?	
Christina Anderson	6	VA	Silver	41.35	1	1	1	47.61	3	24	13		
Michelle Bailey	3	CO	Bronze	46.65	2	4	50						
Pat Berry	5	VA	Bronze	57.24	1	5	1	60.11	11	44	25	Yes	
Leigh Broadhurst	2	MD	Bronze	61.93	2	7	29						
David Burka	2	DC	Bronze	38.79	1	3	1						
Jeff Burka	4	DC	Bronze	83.86	3	3	100						
Tom Butler	2	NC	Bronze	99.40	13	13	100						
Joe Feely	5	DC	Bronze	49.43	1	3	1	57.33	27	46	59		
Peter Galvin	2	DC	Bronze	53.11	2	4	50						
Lee Hagenstad	2	CO	Silver	57.68	4	5	80					Yes	
Roger Hanneman	11	VA	Gold	26.21	4	4	100	27.17	127	163	76		
Randy Knack	4	VA	Silver	30.66	3	5	60						
Peter Lee	4	DC	Silver	35.31	2	2	100						
Nina Litton	7	VA	Gold	37.73	2	2	100	39.05	40	57	70		
Jim MacGillivray	2	MD	Bronze	59.96	5	10	50						
Dave Olsen	11	MD	Gold	16.37	1	3	1	19.35	36	163	22	Yes	
Steve Peirce	8	MD	Gold	25.93	2	3	67	30.95	163	163	100	Yes	
Frank Portell	2	VA	Bronze	74.57	6	8	75						
Hank Robinson	3	DE	Bronze	45.89	1	1	1						
Bernie Schmitt	4	MD	Gold	26.49	3	3	100						
Fred Schubring	4	MD	Bronze	77.75	4	4	100						
Jo Simpson	3	NV	Bronze	66.19	1	1	1					Yes	
Ken Simpson	3	NV	Silver	47.04	1	1	1						
Al Smuzynski	2	VA	Bronze	109.61	3	3	100						
Rick Snell	2	MD	Silver	33.35	7	7	100						
Jay Weides	11	CO	Gold	21.36	1	12	1	22.09	1	78	1	Yes	
Teresa Westfall	3	VA	Gold	31.28	1	1	1					Yes	
Lisa Yost	2	DC	Silver	55.52	1	1	1						

All rankings are within each skier's Nastar age-gender category.  
 State rankings require two races and are based on a skier's second-best result during the season.  
 National rankings require five races and are based on the average of the best three remaining results after throwing out a racer's season-best result.

# Update On Ski Helmets

By John Pratt

(From Martin Forstenzer, contributor, *Ski* magazine)

*The death of actress Natasha Richardson revived the debate about making helmets mandatory on the slopes. Should there even be a debate?*

*The long-running helmet debate has expanded into serious discussions of requiring helmets for everyone on the snow. Vail Resorts, the largest ski operator in the country, recently mandated that all employees wear helmets while skiing or riding on the job, becoming the first company to do so.*

*Richardson remains the lightning rod for helmet proponents. She wasn't wearing a helmet when she fell in soft snow on a beginner slope. She seemed fine afterward, joking about the mishap, but her condition quickly worsened, and she died the next day from internal bleeding caused by a "blunt impact to the head," according to the New York City medical examiner's office. As it happens, the Association of Quebec Emergency Room Doctors had called for ski helmets to be made mandatory about a month before. After the highly publicized accident, the Quebec legislature began debating a law to make helmets mandatory for all skiers.*

*Two months before Richardson's death, the helmet debate had been stirred in Europe by another high-profile skiing fatality. Dieter Althaus, a prominent ally of German Chancellor Angela Merkel, collided with a 41-year-old woman at the Riesneralm resort in Austria. The woman, who was not wearing a helmet, died while being transported to medical care, while the helmeted Althaus was hospitalized with severe brain trauma. He recovered and was later convicted of manslaughter and fined approximately \$50,000.*

*Some industry officials view helmets as the seatbelts of our time: A generation ago few people used seatbelts; now they are universally accepted as standard safety gear, and to not use them while driving is considered reckless. For now, helmets remain a personal decision.*

*Colorado resident Shawn Carlson, 44, is a lifelong skier and has been wearing a helmet for more than a decade, a decision partly prompted by his love of skiing fast. "Any other sport in which you're going 30 miles per hour, you would wear a helmet," Carlson says. "So it seems logical I should wear one."*

Now with all that said, how much is your brain worth? Or put another way, how much is it worth to you to be able to control all your body functions? That's a question from one of my Masters of Science in Safety professors at USC. There is an excellent article on the subject of ski helmets at <http://www.telemarktips.com/Helmets.html>. After you read it, you'll realize that through PSC you no longer have an excuse to ski without wearing a helmet. On the subject of safety it dawned on me one day that I would never think of driving my car without the seat belts fastened. That same epiphany also occurred to me on the subject of helmets. As a helicopter pilot, I would never dream of starting a helicopter without a helmet on, even if I wasn't flying it anywhere. Nor would the Arlington County Chief of Police ever think of riding his bike again without wear-

ing a helmet. But the thought of spending \$100+ for a helmet kind of held me back for a while, (God knows why, considering the price of skiing).

Now for the price of a lunch on the slopes you can have your own personal "Brain Bucket." The PSC is offering ASTM 2040 certified ski helmets. The ASTM certification process for ski helmets is explained in the above link. I will also have a copy of it with me at club meetings. For those of you who are really fashion conscious, at \$23 each, you can have one that matches all your ski outfits. That is the price for ordering and delivery a helmet at the next club meeting. If you want it delivered to your home, the price goes up to \$41.45 regardless of where you order it. They come in Black (as pictured here), Red, Blue, Silver, and Hot Pink. You can order them at club meetings and have them by the next meeting at \$23 each. If you can't make the meetings, but want me to order one for you, send me an e-mail and I'll send you back the size charts and the website to choose your color(s) along with an order form. As soon as I get your check, I'll order the helmet(s) and when they come in I will let you know so we can make arrangements to get you your helmet, unless you want it delivered direct to your home at \$41.45 ea.



---

## PSC Logo Items

**W**ant to get extra Ski Lotto tickets or just some great clothing? At all ski club meetings except the picnic we have Ski Lotto, and if you are wearing something with the PSC logo on it, you are entitled to an extra ticket. Even if you don't attend the meetings or play Ski Lotto, the logo items are a great way to show off your club while you are on the slopes. We have all of the following in stock: automobile license plate holders, baseball caps, and cloisonné ski pins.

For clothing and others item such as tote bags, our supplier is Jill Lee of *Jill's Designs*. Jill has set up a web site at [www.jillsembroidery.com](http://www.jillsembroidery.com).

It's also on the PSC website as a link. At the website you can pick the item you want from the pictures shown there, but if you don't see it listed don't hesitate to contact Jill directly. Just pick out what you want, print out the order form, mail it to Jill, and she'll get back to you when it's ready.

In addition to picking out the basic color of the item you want, you also get to pick out the colors on the logo: the skier; the pentagon diagram; and the words can be all the same color or whatever colors you want them to be.



## England

By Peter Porton

**W**hen's the best time to visit England? In the merry month of May, of course. The weather is mild, the flowers are a'bloom, the kids are still in school, and it's before the big tourist season hits. This trip basically encircles most of London until its last full day in the city itself. All of this at a price that is comparable to some ski trips

We'll be staying at only three hotels, so you won't have to live out of your suitcase: two nights at the Premier Inn York City, six nights at the Premier Inn Aylesbury, in Aylesbury Vale, and the final two nights at the Millennium Bailey's Hotel in London. All the hotels will have a full English breakfast. Lunches and dinners will be on our own. Hmm – fish and chips! Or curry. Or kidney pie; beef Wellington; Wimpy's... whatever you fancy, English cuisine has improved enormously. And don't forget their great beers and ales!

Each day (except for the last day in London), we will have our own dedicated bus, with a family-operated luxury bus company and a husband/wife combination of driver and guide. This will also allow us to make slight deviations along the way (bathrooms, photo-ops, etc.) with no problems. Our daily schedule will be our own.

The sites we will see are numerous (see the itinerary) and one of the great things about this trip is that all the entrance fees for the sites we are seeing (except some in London, and none on Saturday) are included in the cost, as is the tip for the driver and guide. Medical and repatriation insurance is also included. Cancellation insurance is optional.

One of the great things about this trip, aside from the price, is the itinerary. If you tried to do this on your own (renting a car, for example, or using the train), you'd go nuts and broke. Aside from driving on the wrong side of the road, England is known for narrow lanes. It's best to leave the driving to the professionals. In addition, we'll have the opportunity to mix with the locals. We can drive back from, say, Bath and have dinner in a nice village on the way to the hotel Aylesbury (we'll have to look for several places, of course, the restaurants won't be able to handle all of us.). There are other things we'll see that are not on the itinerary. The Chamtneys Spa near Aylesbury might appeal to those of you who need some more coddling. Thus, this will be an easy trip without many travel deadlines. Even the flights are at a moderate hour. Suffice it to say, we'll be in the most beautiful area of En-



Church Street, Aylesbury

gland and we'll be able to see and enjoy it at our leisure.

We'll be departing Dulles on Wednesday, May 9 at 10:05 PM and arrive at Heathrow the following morning at 10:15 AM. The return will be on Sunday, May 20 at 4:20 PM and we'll arrive home at 7:40 PM. Both flights are on United.

Deposits are \$500/person with \$750 due October 11 and

January 5 and the final payment of \$800 is due March 1. Single supplements are \$790. Please send the checks, made out to the PSC, to me at 11918 Moss Point Lane, Reston, VA 20194.

### Itinerary

**Wed May 9:** Arrive at Dulles Airport by 7:00 PM for flight at 10:05 PM. Fly United Airlines nonstop to London Heathrow.

**Thu May 10:** Arrive in London at 10:15 AM and be met by our guide with our private bus for the trip. We will head north to York where we will spend two nights. We will stop in Nottingham on the way. **Hotel: Premier Inn York City**

**Fri May 11:** Group visit to York Minster (whose largest bell is known as...Great Peter!), admission included. The York Minster has more stained glass than all other cathedrals in England...combined! The rest of the day will be at leisure in York to see other sights. We will have our own bus to see those sights.

**Hotel: Premier Inn York City**



York Minster

**Sat May 12:** Depart York at 8:30 am. Arrive Warwick Castle at 11:00 am, admission included. Late afternoon depart Warwick and arrive at our location for the next 6 nights in Aylesbury. **Hotel: Premier Inn Aylesbury**

**Sun May 13:** Depart hotel at 9:00 am and arrive at the



Bath

Hampton Court Palace and Gardens at 10:15 AM, admission included. Return to hotel in the evening. **Hotel: Premier Inn Aylesbury**

**Mon May 14:** Depart our hotel at 8:30 AM for Stonehenge and then on to Bath. Return to hotel in the evening. **Hotel: Premier Inn Aylesbury**

**Tue May 15:** Depart our hotel at 10:00 am. Arrive at Oxford at 10:30 am for a day-long visit to Oxford. Return to hotel in the evening. **Hotel: Premier Inn Aylesbury**

**Wed May 16:** Depart hotel at 9:00 AM. Visit Winston Churchill's birthplace, Blenheim Palace, at 10:00 AM, admission included. Afterwards we will continue on to the villages of the Cotswolds, stopping at Bourton-on-the-Water. **Hotel: Premier Inn Aylesbury**

**Thu May 17:** Depart our hotel at 9:00 am and begin our tour in Cambridge at 10:00 AM at the King's Chapel, admission included. There are optional ways to spend the afternoon in Cambridge (the "Venice" of England), including going on a bike tour of the town. **Hotel: Premier Inn Aylesbury**

**Fri May 18:** Depart Aylesbury at 8:00 AM for London. Upon arrival, we will have the bus for the day for a hop-on hop-



Blenheim

off tour of the city. Admission is free for the stops at the British Museum, Victoria & Albert Museum, Harrod's and the sights of Westminster, including Houses of Parliament. There will be plenty of opportunities for photos along the way. Any other admission fees are on our own. **Hotel: Millennium Bailey's Hotel**



Bridge of Sighs, Cambridge

**Sat May 19:** Day at leisure in London. Perhaps an evening out at a West End theatre. **Hotel: Millennium Bailey's Hotel**

**Sun May 20:** Morning is on our own in London. Sleep or tour. Load bus at noon for the airport for flight at 4:20 PM. Fly United Airlines nonstop to Dulles, arriving at 7:40 PM on the same day.



December 27  
- January 2  
\$1625



Tue - Mon. 6 nights at ski-in, ski-out Ptarmigan Inn (Hotel). 4 day lifts. RT, non-stop from Dulles to Denver. Optional Breakfast \$78 for the week. Discounts available for kids if rooms are shared. Contact Peter Porton at 703-471-7791 or prespsc@comcast.net.



January 7-14  
\$1590

Sat - Sat. 7 nights in Evergreen Lodge (Hotel) w. daily hot breakfast. 5 day lift tickets also good at Beaver Creek, Breck., Keystone, and A-Basin. RT non-stop on Frontier from Reagan - Denver. Contact Steve Peirce at 301-924-5173 or scepierce@verizon.net.

January 12-17  
\$1140



Thu - Tue. MLK Weekend Leave Saver. 5 nights in historic Ben Lomond Hotel in Ogden w. daily buffet breakfast. RT on Continental from Reagan to SLC via Houston. 2-day lifts at each resort. Contact Jim McDonough at 703-619-0020 or jmc dono683@aol.com.



January 20-28  
\$2800

Fri - Sat. 7 nights in ski-in/ski-out Hotel Ormelune w. all breakfasts & 4 dinners. RT non-stop on United from Dulles to Geneva. Opt. post-trip to Vienna (\$760) returns Feb 1. Emergency medical/repatriation (not cancellation) insurance included. Lift tickets not included. Contact Dave Olsen at (H) 301-579-2749(W) 202-385-7207 or dolsen@pentagonskiclub.org; or Steve Thompson at 703-435-5170 or stevethompsonva@verizon.net.

January 28 -  
February 4  
\$1630



Sat - Sat. 7 nights in ski-in/ski-out Cliff Lodge (Hotel). 6 day lift tickets good at both resorts. RT non-stop on SW, BWI to SLC. Deduct \$102 for snowboarders (no boarding at Alta). Contact Lucy Gruenther at 703-727-9287 or Lmandwx@hotmail.com



February 4-11  
\$1400

Sat - Sat. 7 nights slopeside Kandahar Lodge (Hotel) w. welcome reception & daily continental breakfast. 4-day lift tickets at Whitefish; 1 day at Fernie, Canada (passport required). RT on United, Dulles to Kalispell via Denver. Contact Maggie Fitzgerald at 703-461-3027 or magsfitzgerald@comcast.net

February  
11-18  
\$1750



Sat - Sat. BRSC Western Carnival. 7 nights at slopeside Wildwood Lodge (Hotel) w. daily buffet breakfast. 5 day lift tickets also good at Aspen, A. Highlands, & Buttermilk. Nastar Race, welcome & apres-ski party & Farewell dinner/dance. RT non-stop on SW from Dulles to Denver. Contact Christina Anderson at 703-719-6714 or gerakisparta@yahoo.com.



February  
18-25  
\$1490

Sat - Sat. Presidents Week. 7 nights at 49er Inn & Suites w. one elk bbq dinner and daily continental breakfasts. 4-day lift tickets at JH; 1-day ticket for Grand Targhee. RT on United from Dulles to JH via Chicago. Contact Steve Thompson at 703-435-5170 or stevethompsonva@verizon.net or Fred Gardinier at 301-739-5097 or fgardinier@hotmail.com

March 3-11  
\$2025



Sat - Sun. BRSC Eurofest, includes 2 parties & dinner/dance. 7 nights in Hotel Crowne Plaza w. breakfasts and 5 dinners. RT to Barcelona on Air France from Dulles via Paris. Emergency medical/repatriation (not cancellation) insurance included. Lift tickets not included. Opt. 3 night trip to Madrid + 1 extra day in Barcelona (\$800). Contact Peter Porton at 703-471-7791 or prespsc@comcast.net; or Christina Anderson at 703-719-6714 or gerakisparta@yahoo.com.



March 10-19  
\$1640



Sat - Sat. 6 nights at Powder Springs Inn (Hotel) w. daily hot breakfasts. Last night at the Sandman Hotel in Kelowna. 5-day lift tickets. RT on Air Canada, Reagan to Kelowna via Toronto out/via Vancouver & Montreal back. Contact Steve Peirce at 301-924-5173 or sspeirce@verizon.net.

March 17-24  
\$1470



Sat - Sat. 7 nights at Riverhouse Hotel & Resort w. daily hot breakfast buffets. 5-day lift tickets. RT on United, Dulles to Redmond, OR, via SF. Contact Jim McDonough at 703-619-0020 or jmcdo683@aol.com.



March 24-31  
\$1720

Sat - Sat. 7 nights at Aspen Street Inn w. welcome reception and daily deluxe breakfast. 5 day lift tickets. RT on American from Reagan to Montrose via Dallas. Contact Maggie Fitzgerald at 703-461-3027 or magsfitzgerald@comcast.net

# Pentagon Ski Club

## *The Liftline*

Peter Porton, Editor

11918 Moss Point Lane

Reston, VA 20194

PRESORTED  
STANDARD  
U.S. POSTAGE  
PAID  
PERMIT NO. 2782  
MERRIFIELD, VA



# Fall 2011



**CLUB HOTLINE: 703-471-7791**

**CLUB WEBSITE: [WWW.PENTAGONSKICLUB.ORG](http://WWW.PENTAGONSKICLUB.ORG)**

**MEETING DIRECTIONS: [WWW.PENTAGONSKICLUB.ORG/DIRECTIONS.PHP](http://WWW.PENTAGONSKICLUB.ORG/DIRECTIONS.PHP)**



**T**he first three membership meetings of the new ski season are on September 13, October 11 and November 8. Check Page 2 for our full season meeting schedule.

Our trips are selling very well so be sure to call your tripleaders before they are sold out! The schedule is listed inside.

We also have information on the first of next year's non-ski trips, the English countryside; our next issue will have information on Spain in the fall, though that will be on the web shortly.

Our meetings start at 7 PM, or earlier for some of the old-timers. But remember, don't drink and drive!

